



# MONTHLY MEMBERSHIP PROGRESS REPORT

District 105 A

Results as of: 06/30/2018

GMT: JOOST PAIJMANS

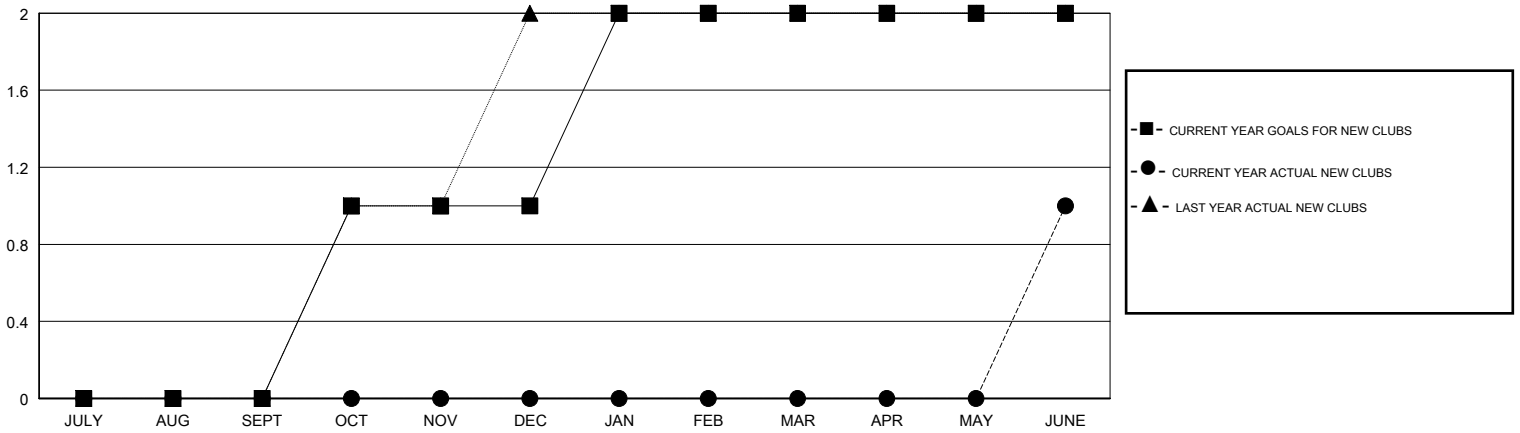
LOCATION ENGLAND

GMT CA

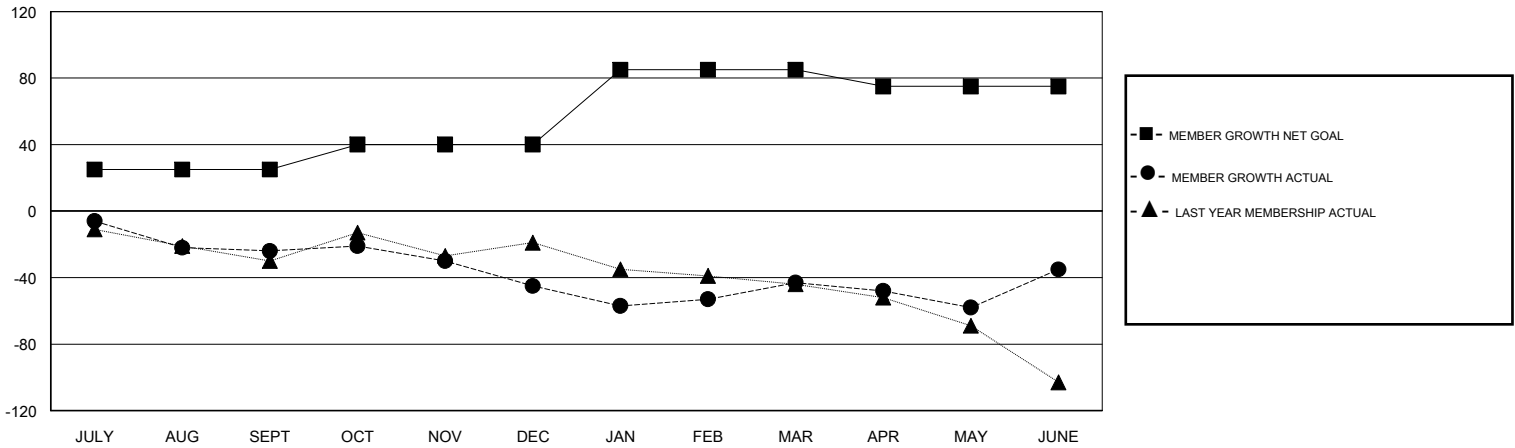
Clubs			
RESULTS FOR 2017-2018			
QUARTER	NEW CLUB GOAL	NEW CLUBS	DROPPED CLUBS
JULY/AUG/SEPT	0	0	1
OCT/NOV/DEC	1	0	1
JAN/FEB/MAR	1	0	1
APR/MAY/JUNE	0	1	1

Members			
RESULTS FOR 2017-2018			
QUARTER	MEMBER GROWTH NET GOAL	MEMBER GROWTH ACTUAL	DROPPED MEMBERS ACTUAL (including transfers)
JULY/AUG/SEPT	25	25	48
OCT/NOV/DEC	15	22	40
JAN/FEB/MAR	45	41	35
APR/MAY/JUNE	-10	98	85

GOALS AND ACTUAL NEW CLUBS CUMULATIVE



GOALS AND ACTUAL MEMBERS CUMULATIVE



DROPPED CLUBS: 4	44 CLUBS OF 72 ADDED 1 OR MORE NEW MEMBERS	<u>GENDER DISTRIBUTION</u>	
		MALE	1,030 (73.89%)
DROPPED MEMBERS	<a href="#">CLICK HERE FOR CUMULATIVE MEMBERSHIP DATA</a>	FEMALE	364 (26.11%)
DECEASED		13	Women Percentage Fiscal Year Goal: 25%
CLUB CANCELLED	25	TOTAL FAMILY UNIT MEMBERS	0
OTHER	170	FAMILY MEMBERS PAYING HALF DUES	0
TOTAL	208		